



SCAN ME

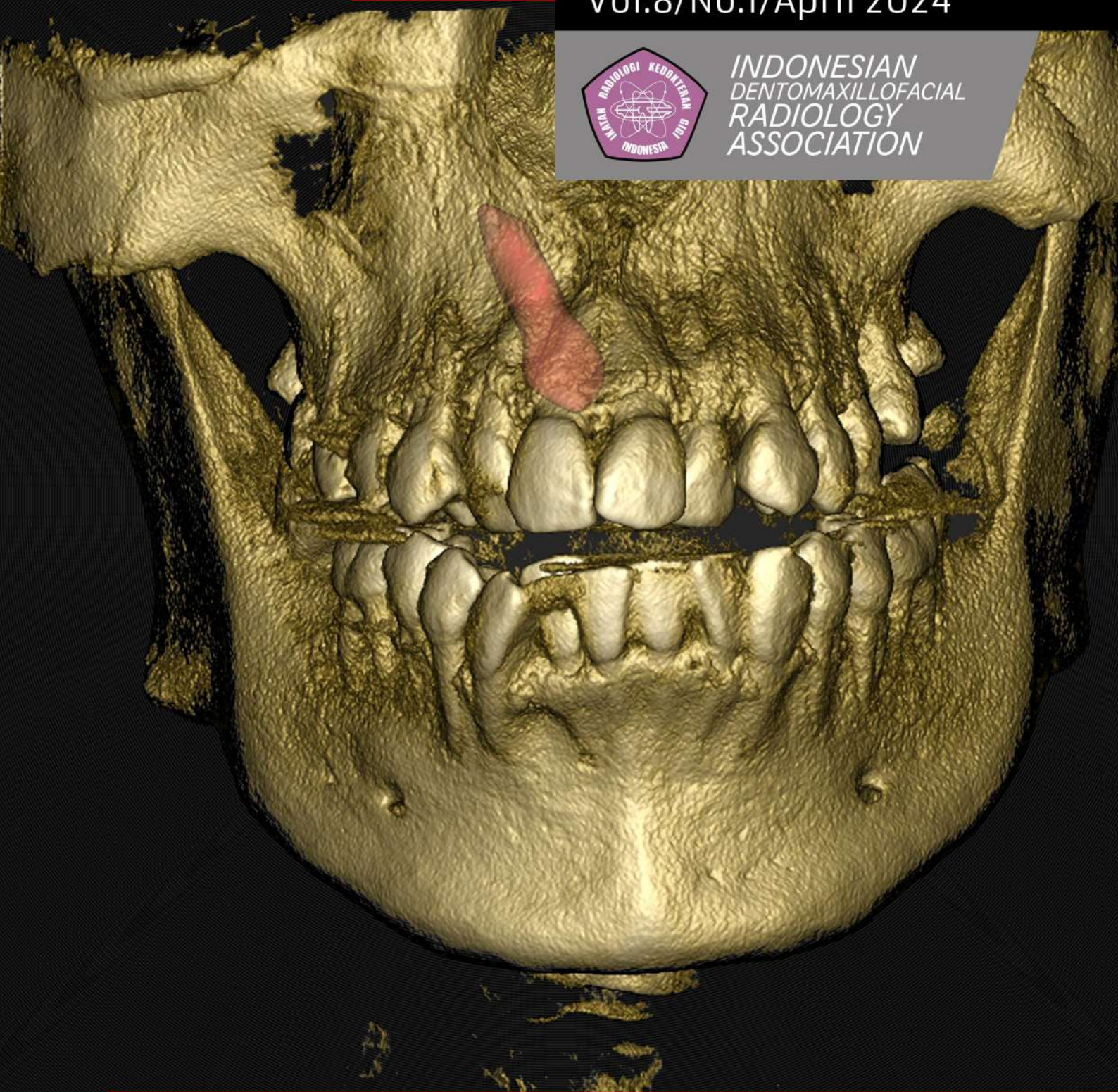
JADI

JURNAL RADIOLOGI DENTOMAKSILOFASIAL INDONESIA

Vol.8/No.1/April 2024



INDONESIAN
DENTOMAXILLOFACIAL
RADIOLOGY
ASSOCIATION



JRDI

JURNAL RADIOLOGI DENTOMAKSILOFASIAL INDONESIA

Jurnal Radiologi Dentomaksilofasial Indonesia

ISSN 2685-0249 (print) 2686-1321 (online)

EDITORIAL TEAM



EXECUTIVE EDITOR

Haris Nasutianto
Universitas Mahasaraswati, Denpasar, Indonesia
risikargi@gmail.com



CHIEF EDITOR

Azhari
Universitas Padjadjaran, Bandung, Indonesia
azhari@fkg.unpad.ac.id



DUTY EDITOR

Lusi Epsilawati
Universitas Padjadjaran, Bandung, Indonesia
lusi.epsilawati@fkg.unpad.ac.id

EDITORIAL BOARD

Hanna Bachtiar Iskandar | Universitas Indonesia, Jakarta, Indonesia
Suhardo Sitam | Universitas Padjadjaran, Bandung, Indonesia
Munakhir Mudjosemedi | Universitas Gadjah Mada, Yogyakarta, Indonesia
Barunawaty Yunus | Universitas Hasanuddin, Makassar, Indonesia
Eha Renwi Astuti | Universitas Airlangga, Surabaya, Indonesia
Menik Praminiarti | Universitas Indonesia, Jakarta, Indonesia
Trelia Boel | Universitas Sumatra Utara, Medan, Indonesia
Farina Pramanik | Universitas Padjadjaran, Bandung, Indonesia
Isti Rahayu Suryani | Universitas Gadjah Mada, Yogyakarta, Indonesia
Muhammad Novo Perwira Lubis | Universitas Trisakti, Jakarta, Indonesia

MANAGING EDITOR

Aga Satria Nurrachman | Universitas Airlangga, Surabaya, Indonesia
Noraila Sarifah | Universitas Lambung Mangkurat, Banjarmasin, Indonesia

PRODUCTION TEAM

Silviana Farrah Diba | Universitas Gadjah Mada, Yogyakarta, Indonesia
Rellyca Sola Gracea | Universitas Gadjah Mada, Yogyakarta, Indonesia
Yurika Ambar Lita | Universitas Padjadjaran, Bandung, Indonesia
Annisa Putri | Institut Ilmu Kesehatan Bhakti Wiyata, Kediri, Indonesia
Merry Annisa Damayanti | Universitas Padjadjaran, Bandung, Indonesia
Fadhliil Ulum Abdul Rahman | Universitas Hasanuddin, Makassar, Indonesia
Chrisna Ardhya Medika | Universitas Padjadjaran, Bandung, Indonesia
Fahri Reza Ramadhan | Universitas Padjadjaran, Bandung, Indonesia

ABOUT JRDI

Jurnal Radiologi Dentomaksilofasial Indonesia (JRDI) is an open-access journal published regularly in April, August, and December every year by the Indonesian Dental Radiology Association (IKARGI). **JRDI** contains scientific manuscripts with special topics in the field of Dental Radiology, including discussions on advances in information in the field of Dentomaxillofacial Radiology of Dentistry in the oral cavity and jaws, as well as digital radiology, teledentistry, radiation effect and protection. **JRDI** accepts articles in the form of original research, case reports, literature studies, systematic reviews and original ideas in the field of dentistry related to Dentomaxillofacial Radiology.

All articles published in **JRDI** are fully open access: immediately freely available to read, download and share, on the principle that making it freely available to the public supports a greater global exchange of knowledge as a fundamental part of our mission and a public benefit to be encouraged wherever possible. Articles in **JRDI** are published under the terms of a Creative Commons license which permits use, distribution and reproduction in any medium, provided the original work is properly cited.

MANUSCRIPT SUBMISSION

Manuscript submissions are made online through the OJS (Open Journal Systems) system at <http://jurnal.pdgi.or.id/index.php/jrdi/index>. Scientific papers are written according to downloadable templates and writing guides. Authors are required to register and create an account first. Manuscript files are uploaded in DOC format and figures are uploaded in JPG, PNG or TIFF format. Manual submission of manuscripts can be done by sending a printout of the article manuscript in an envelope along with a CD containing files, along with an attachment to a statement of originality of the paper where the paper has never been published and does not contain elements of plagiarism, along with the identity of the authors (full name), title, institution and address, postal and e-mail addresses, telephone, mobile and facsimile numbers.

Manual submission of manuscripts can be delivered directly, sent by post to the Secretariat: **DEPARTEMEN RADIOLOGI KEDOKTERAN GIGI, FAKULTAS KEDOKTERAN GIGI, UNIVERSITAS PADJADJARAN, JL. SEKELOA SELATAN NO. 1, BANDUNG 40132, INDONESIA**, or in the form of a file attachment sent to the e-mail address: jurnalrldi@gmail.com.

OPEN ACCESS

- ✓ Double-blind peer review
- ✓ Open access
- ✓ Tri-annual release
- ✓ Online submission & review process

SUBMISSION URL

<http://jurnal.pdgi.or.id/index.php/jrdi/about/submissions>

CONTACT jurnalrldi@gmail.com



Indonesian Association
of
Dentomaxillofacial Radiology



Persatuan Dokter Gigi Indonesia
Indonesian Dental Association

CONTENTS



- Distribution of dental anomalies in panoramic radiography at RSGMP Universitas Airlangga** 1-6
Otty Ratna Wahyuni, Deny Saputra, Yunita Savitri, Sri Wigati Mardi Mulyani, Aga Satria Nurrachman, Alhidayati Asymal, Fany Fandani
- Differences in mental index value in patients with type II diabetes mellitus using panoramic radiography** 7-12
Frida Dillenia Contesa Garcia, Norlaila Sarifah, Bayu Indra Sukmana, Melisa Budipramana, Galuh Dwinta Sari
- The effect of changing vertical irradiation angle of periapical radiography bisecting technique on the length dimension of mandibular teeth** 13-18
Andrew Sebastian Wijaya, Muhammad Novo Perwira Lubis
- Knowledge of the senior high-school students in Sukarami subdistrict of Palembang about dental radiographic examination** 19-24
Dewi Kartika, Cek Dara Manja, Vini Heliza
- Case report: Detection of maxillary sinusitis with inverted impacted teeth using Cone-beam Computed Tomography** 25-28
Merry Annisa Damayanti, Rifarana Inayah Dhiaulhaq, Muhammad Rakhmat Eryad Muchlis, Lusi Epsilawati, Belly Sam, Farina Pramanik, Yurika Ambar Lita
- Enhancing the diagnosis of sublingual sialolith using CBCT: a case report** 29-32
Dimas Satria Putra, Lusi Epsilawati
- CBCT-3D radiographic analysis of an infected radicular cyst of the upper jaw: a case report** 33-36
Ade Prawira, Barunawaty Yunus, Fadhlil Ulum Abdul Rahman, Mukhtar Nur Anam
- A novel approach of tongue cancer diagnostic imaging: a literature review** 37-46
Gavrila Samitra Dwiputri, Fadhlil Ulum Abdul Rahman

JRDI

JURNAL RADIOLOGI DENTOMAKSILOFASIAL INDONESIA

Secretariat:
Departemen Radiologi Kedokteran Gigi
FKG Universitas Padjadjaran
Jl. Sekeloa Selatan I Bandung, Indonesia

■ jurnalrdi@gmail.com

© 2024 JRDI, Published by Ikatan Radiologi
Kedokteran Gigi Indonesia.

ISSN 2686-1321



9 772686 132009

ISSN 2685-0249



9 772685 024008