



SCAN ME

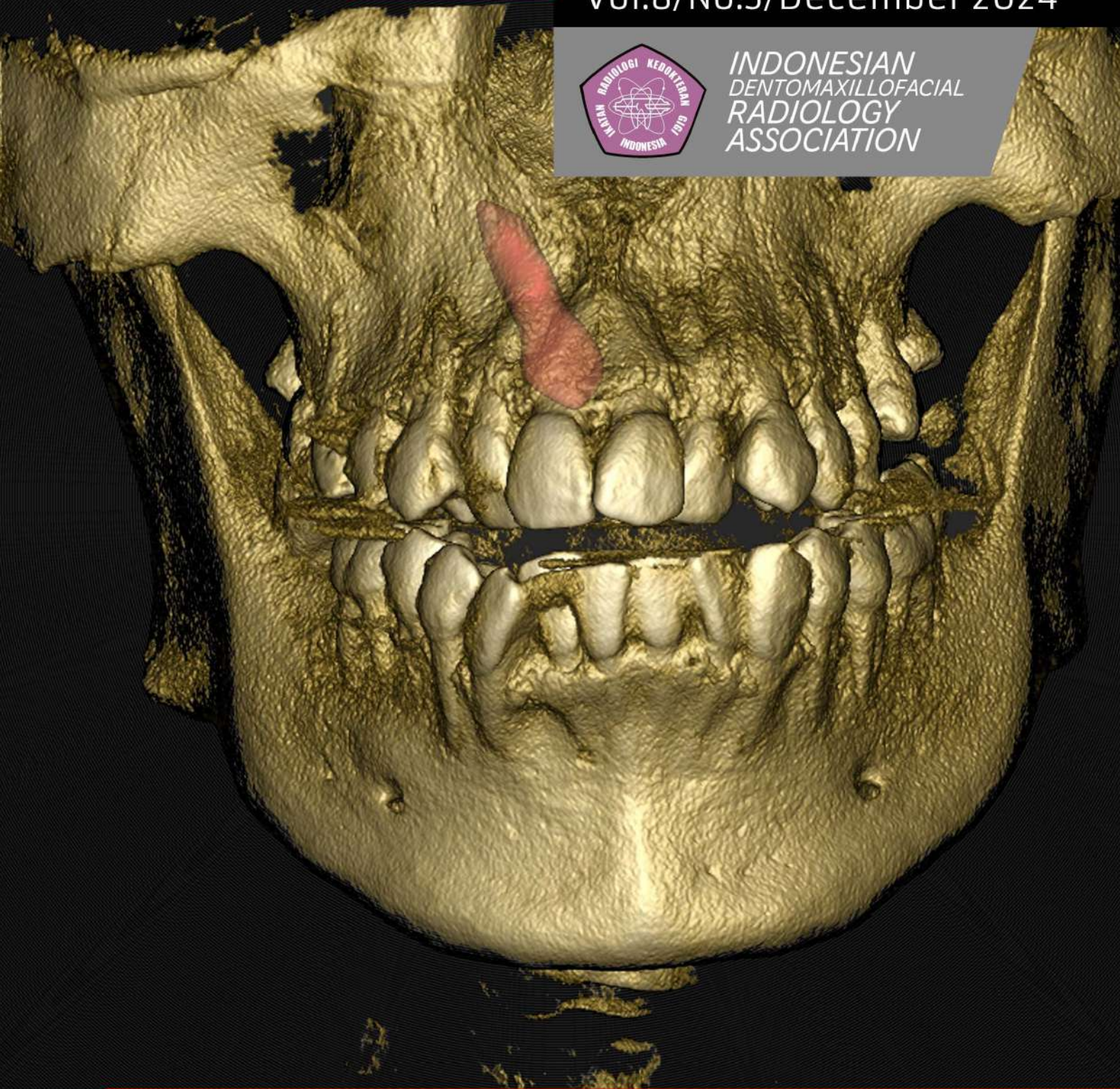
# JADI

JURNAL RADIOLOGI DENTOMAKSILOFASIAL INDONESIA

Vol.8/No.3/December 2024



INDONESIAN  
DENTOMAXILLOFACIAL  
RADIOLOGY  
ASSOCIATION





## EDITORIAL TEAM



### EXECUTIVE EDITOR

**Haris Nasutianto**  
Universitas Mahasaraswati, Denpasar, Indonesia  
[risikargi@gmail.com](mailto:risikargi@gmail.com)



### CHIEF EDITOR

**Azhari**  
Universitas Padjadjaran, Bandung, Indonesia  
[azhari@fkg.unpad.ac.id](mailto:azhari@fkg.unpad.ac.id)



### DUTY EDITOR

**Lusi Epsilawati**  
Universitas Padjadjaran, Bandung, Indonesia  
[lusi.epsilawati@fkg.unpad.ac.id](mailto:lusi.epsilawati@fkg.unpad.ac.id)

## EDITORIAL BOARD

**Hanna Bachtiar Iskandar** | Universitas Indonesia, Jakarta, Indonesia  
**Suhardo Sitam** | Universitas Padjadjaran, Bandung, Indonesia  
**Munakhir Mudjosemedi** | Universitas Gadjah Mada, Yogyakarta, Indonesia  
**Barunawaty Yunus** | Universitas Hasanuddin, Makassar, Indonesia  
**Eha Renwi Astuti** | Universitas Airlangga, Surabaya, Indonesia  
**Menik Praminiarti** | Universitas Indonesia, Jakarta, Indonesia  
**Trelia Boel** | Universitas Sumatra Utara, Medan, Indonesia  
**Farina Pramanik** | Universitas Padjadjaran, Bandung, Indonesia  
**Isti Rahayu Suryani** | Universitas Gadjah Mada, Yogyakarta, Indonesia  
**Muhammad Novo Perwira Lubis** | Universitas Trisakti, Jakarta, Indonesia

## MANAGING EDITOR

**Aga Satria Nurrachman** | Universitas Airlangga, Surabaya, Indonesia  
**Noraila Sarifah** | Universitas Lambung Mangkurat, Banjarmasin, Indonesia

## PRODUCTION TEAM

**Silviana Farrah Diba** | Universitas Gadjah Mada, Yogyakarta, Indonesia  
**Rellyca Sola Gracea** | Universitas Gadjah Mada, Yogyakarta, Indonesia  
**Yurika Ambar Lita** | Universitas Padjadjaran, Bandung, Indonesia  
**Annisa Putri** | Institut Ilmu Kesehatan Bhakti Wiyata, Kediri, Indonesia  
**Merry Annisa Damayanti** | Universitas Padjadjaran, Bandung, Indonesia  
**Fadhliil Ulum Abdul Rahman** | Universitas Hasanuddin, Makassar, Indonesia  
**Chrisna Ardhya Medika** | Universitas Padjadjaran, Bandung, Indonesia  
**Fahri Reza Ramadhan** | Universitas Padjadjaran, Bandung, Indonesia

## ABOUT JRDI

**Jurnal Radiologi Dentomaksilofasial Indonesia (JRDI)** is an open-access journal published regularly in April, August, and December every year by the Indonesian Dental Radiology Association (IKARGI). **JRDI** contains scientific manuscripts with special topics in the field of Dental Radiology, including discussions on advances in information in the field of Dentomaxillofacial Radiology of Dentistry in the oral cavity and jaws, as well as digital radiology, teledentistry, radiation effect and protection. **JRDI** accepts articles in the form of original research, case reports, literature studies, systematic reviews and original ideas in the field of dentistry related to Dentomaxillofacial Radiology.

All articles published in **JRDI** are fully open access: immediately freely available to read, download and share, on the principle that making it freely available to the public supports a greater global exchange of knowledge as a fundamental part of our mission and a public benefit to be encouraged wherever possible. Articles in **JRDI** are published under the terms of a Creative Commons license which permits use, distribution and reproduction in any medium, provided the original work is properly cited.

## MANUSCRIPT SUBMISSION

Manuscript submissions are made online through the OJS (Open Journal Systems) system at <http://jurnal.pdgi.or.id/index.php/jrdi/index>. Scientific papers are written according to downloadable templates and writing guides. Authors are required to register and create an account first. Manuscript files are uploaded in DOC format and figures are uploaded in JPG, PNG or TIFF format. Manual submission of manuscripts can be done by sending a printout of the article manuscript in an envelope along with a CD containing files, along with an attachment to a statement of originality of the paper where the paper has never been published and does not contain elements of plagiarism, along with the identity of the authors (full name), title, institution and address, postal and e-mail addresses, telephone, mobile and facsimile numbers.

Manual submission of manuscripts can be delivered directly, sent by post to the Sekretariat: **DEPARTEMEN RADIOLOGI KEDOKTERAN GIGI, FAKULTAS KEDOKTERAN GIGI, UNIVERSITAS PADJADJARAN, JL. SEKELOA SELATAN NO. 1, BANDUNG 40132, INDONESIA**, or in the form of a file attachment sent to the e-mail address: [jurnalrdi@gmail.com](mailto:jurnalrdi@gmail.com).



- ✓ Double-blind peer review
- ✓ Open access
- ✓ Tri-annual release
- ✓ Online submission & review process

### SUBMISSION URL

<http://jurnal.pdgi.or.id/index.php/jrdi/about/submissions>

CONTACT [jurnalrdi@gmail.com](mailto:jurnalrdi@gmail.com)



Indonesian Association  
of  
Dentomaxillofacial Radiology



Persatuan Dokter Gigi Indonesia  
Indonesian Dental Association

# CONTENTS



- Correlation of age to classification of vertical relationship of maxillary sinus and maxillary first molar root by cone-beam computed tomography: a cross-sectional study** 97-102  
Mutiarasukma Sunatana, Rudi Satria Darwis, Rena Izzatin Nissa, Ratna Trisusanti
- Unraveling the hidden connection: Impacted third molar classification and mandibular canal proximity on panoramic radiographs** 103-112  
Novi Kurniati, Sabrina Tiara Hani
- Approximation length of the mandibular first molar tooth of Bataknese based on gender analyzed using parallel techniques** 113-118  
Cek Dara Manja, Ummu Mahfuzah Nur Salam
- Description of the shape and position of the condyles in Kennedy classification class I, II, III, and IV patients through panoramic radiography** 119-124  
Norlaila Sarifah, Angelia Wurie Andiyah, Irham Taufiqurrahman, Tri Nurrahman, Galuh Dwinta Sari, Bayu Indra Sukmana
- Analysis of ameloblastic fibroma lesion on panoramic radiograph: a case report** 125-128  
Muhammad Rakhmat Eryad Muchlis, Ria Noerianingsih Firman, Lusi Epsilawati
- Odontogenic sinusitis due to radix perforation into the maxillary sinus on CBCT radiograph: a case report** 129-132  
Gunawan Gunawan, Ivony Fitria, Harfindo Nismal, Desy Purnama Sari
- The role of radiographic imaging and finite element analysis in evaluating occlusal loads and stress distribution in the periodontal ligament** 133-140  
Lidya Irani Nainggolan, Menik Priaminiarti, Brama Kiswanjaya, Hanna Bachtiar Iskandar
- Cone-Beam CT, CT and MRI for odontogenic tumors: a narrative review of imaging characteristics** 141-146  
Melisa Öçbe

**JRDI**

JURNAL RADIOLOGI DENTOMAKSILOFASIAL INDONESIA

Secretariat:  
Departemen Radiologi Kedokteran Gigi  
FKG Universitas Padjadjaran  
Jl. Sekeloa Selatan I Bandung, Indonesia

✉ [jurnalrdi@gmail.com](mailto:jurnalrdi@gmail.com)

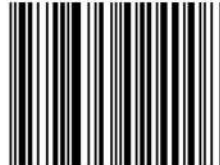
© 2021 JRDI. Published by Ikatan Radiologi  
Kedokteran Gigi Indonesia.

ISSN 2686-1321



9 772686 132009

ISSN 2685-0249



9 772685 024008